

CP-K60DW Firmware Update Tool

Disclaimer

By downloading the software utility tool, you agreed not to distribute the software or any file(s) contained within the software. You may not use the software other than what is intended as described in this document. You may not alter, reverse engineer, decompile or reverse assemble the software. Any of these actions are prohibited and will void and forfeit the product warranty of the printer.

Requirement

Model: CP-K60DW
 System: PC with Windows XP, Windows Vista or Windows 7 (32-bit or 64-bit systems) *1
 Cable: USB high speed type (USB 2.0 certified)
 USB Port Driver: Printing Support(32-bit or 64bit systems), MITSUBISHI USB Port (32-bit system)
 *1 Microsoft Windows, Windows XP and Windows Vista are either registered trademarks or trademarks of Microsoft Corporation in the United States and/or other countries.

Pre-cautions

1. The printer must be functional and in ready (idle) mode.
2. The software will not work if the printer has an error (Alarm ON).
3. Do not turn OFF the printer while the software is running.
4. Do not disconnect the USB cable while the software is running.

If any of the above occurs, printer data will be corrupted and may result to non-functional printer. Any failure during the update is not covered under the warranty.

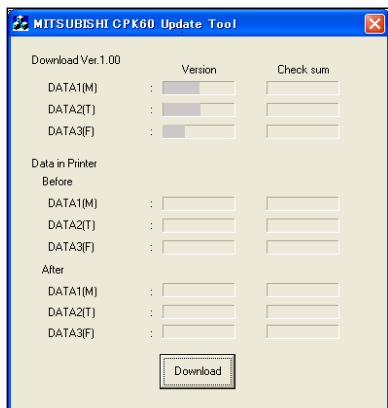
Preparation

- Install print paper roll and ink ribbon in the printer.
- Make sure the printer is ready and do not have any error (ALARM is OFF).

Firmware update will not function if the software detects an error with the printer.
 If you have more than one printer, you can only update the printer firmware one at a time.

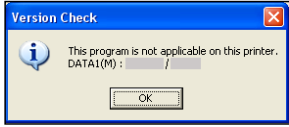
Printer update procedure

1. Turn ON the printer.
2. Connect the printer to your PC using the USB cable.
3. Locate the file called "DLCPK60_VerXXX.exe" which was downloaded.
4. Double click the file to run the update program. A window dialog is displayed as shown below.



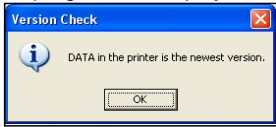
<Fig.1>

5. Click "Download" to initiate the firmware update.
6. If the software cannot update the printer, a dialog box will appear in fig 2. This means the software and the printer are not compatible.



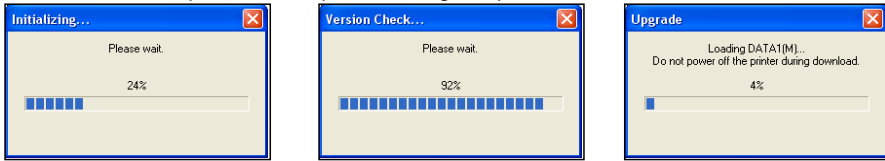
<Fig.2>

7. If the printer has the latest firmware, the update program will indicate and show a dialog box fig 3. The program will display the version of all DATA loaded in the printer.



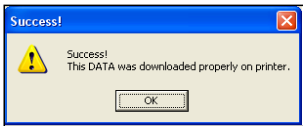
<Fig.3>

8. The progress bar indicator appears during the update. Do not disconnect or power off the printer during this process.



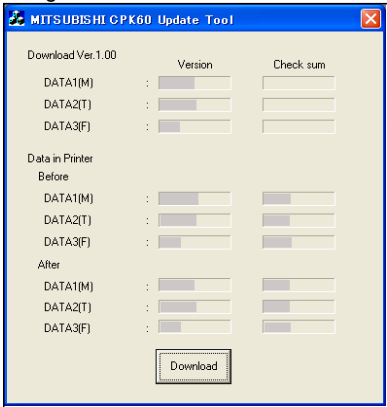
<Fig.4>

9. The firmware update is complete when a dialog box appears in fig 5. Click "OK"



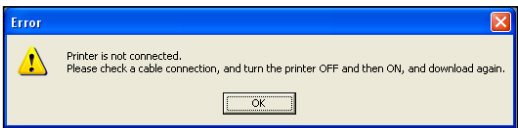
<Fig.5>

10. Final confirmation show a dialog box Fig 6 with information about original and after firmware update. The figure will show the version and checksum for your reference.



<Fig.6>

11. Close the update program by clicking the "X" mark (top right corner).
12. In an event where the update fails, a dialog box fig 7 will appear. Reset the printer power and start from step 1 again.



<Fig.7>